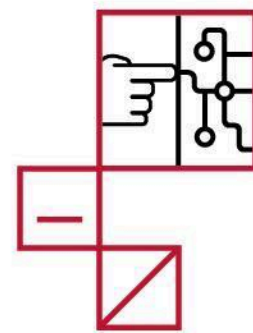
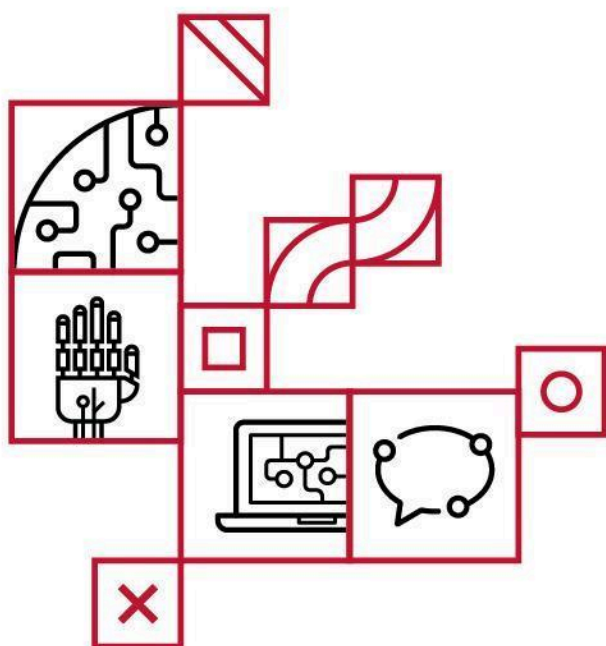


# Affiliated Ph.D. Programs



# Student Guide

2024-2025



**Carnegie  
Mellon**  
**Portugal**



Prepared by: Carnegie Mellon Portugal Program

This handbook is provided for informational purposes only and is intended to assist you during your participation in the Carnegie Mellon Portugal Program. If you have additional questions that are not answered by this handbook, please [contact us](#).

We are here to help.

Please also check our [FAQ page](#)

## Table of Contents

<b>1. Welcome</b>	<b>5</b>
<b>2. Contacts</b>	<b>6</b>
2.1 Coordination Office	6
2.2 Scientific Directors	8
<b>3. About the Carnegie Mellon Program</b>	<b>9</b>
3.1 Affiliated Ph.D. Programs	10
<b>4. Your Scholarship</b>	<b>10</b>
4.1 Process to Obtain the FCT Scholarship	11
4.2 Support for Installation and Travel	13
4.3 Support for Research Visits to CMU While in Portugal	13
4.4 Support to Participate in Scientific Meetings	14
4.5 Health Insurance while at CMU	14
4.6 Other Sources of Funding	14
Internships	14
<b>5. Before Departure</b>	<b>15</b>
5.1 Financial Arrangements	15
5.2 Visa and Entering Portugal	15
5.3 Applying for a U.S. Visa	17
Long Term Visits	17
1) Get your DS-2019 (for J-1 status) and pay the SEVIS Fee	17
2) Apply for a J-1 VISA	18
Planning Ahead for the Visa Process, Not just your Academic Admission	18
Applying for a Visa - Key Points to Keep in Mind	19
Key Information About Visas and Entering the United States	19
Short Term Visits	19
5.4 Housing Arrangements	20
Portugal	20
Pittsburgh	20
5.5 Medical Insurance	21
Medical Insurance in Portugal	21
Civil Liability Insurance	22
Personal Physical Accidents Insurance	22
Health Insurance in the U.S.	22

<b>6. During Your Stay Period</b>	<b>23</b>
6.1 Upon Arrival to Portugal	23
Residence Card	23
Request a residence card	23
Renew a residence card	25
6.2 Upon Arrival to the U.S.	25
Foreign Student Documents and Maintaining Legal Immigration Status	25
6.3 Transfers between Portugal and USA	28
Activation of scholarship when at CMU and scholarship renewal	28
Going to CMU	28
Transferring back to the Portuguese Institution	30
Staying at a Portuguese Institution	31
<b>7. Reporting to the CMU Portugal Program</b>	<b>32</b>
<b>8. Good Practice for Acknowledging FCT and CMU Portugal Program</b>	<b>33</b>
<b>9. Academic Calendar in Portugal</b>	<b>34</b>
Important dates - Basic Calendar	34
<b>10. Useful Addresses</b>	<b>35</b>
OIE - Office of International Education at Carnegie Mellon University	35
Governmental Agencies in Portugal	35
Courses of Portuguese Language for Foreigners	35
Where to Learn Portuguese?	35
Cultural Organizations in Pittsburgh	35

## 1. Welcome

Welcome to the Carnegie Mellon Portugal Program!

The goal of the student guide is to provide you with essential information on various organizational aspects related to your involvement in the partnership and its educational programs.

We aim to assist you in adapting to your new student life in Portugal and in Pittsburgh and we hope that this student guide will be a valuable resource throughout your path within the Carnegie Mellon Portugal Program.

The Executive Teams at Carnegie Mellon and Portugal are available at your disposal. Please do not hesitate to contact us with questions, suggestions and ideas.

Very best wishes,

Inês Lynce  
*National Director at Portugal*

José M. F. Moura  
*Director at Carnegie Mellon University*

## 2. Contacts

### 2.1 Coordination Office

#### @ Carnegie Mellon University

Carnegie Mellon University  
Wean Hall, Room 4106  
4800 Forbes Avenue  
Pittsburgh, PA 15213  
412-268-5344



**José M. F. Moura, Director at CMU**  
[leadership@cmuportugal.org](mailto:leadership@cmuportugal.org)



**Megan Berty, Associate Director**  
[mflohr@andrew.cmu.edu](mailto:mflohr@andrew.cmu.edu)

#### @ Portugal

Carnegie Mellon Portugal Program  
INESC ID, Room 412  
Rua Alves Redol nº9  
Lisboa 1049-001 Portugal



**João Magalhães & Inês Lynce, National Directors at Portugal**  
[leadership@cmuportugal.org](mailto:leadership@cmuportugal.org)



**Sílvia Castro, Executive Director**  
[silvia.castro@cmuportugal.org](mailto:silvia.castro@cmuportugal.org)



**Nikki Singer, Administrative Coordinator**  
[nikoles@andrew.cmu.edu](mailto:nikoles@andrew.cmu.edu)



**João Fumega, Education Officer**  
[joao.fumega@cmuportugal.org](mailto:joao.fumega@cmuportugal.org)



**Mariana Carmo, Communications Officer**  
[mariana.carmo@cmuportugal.org](mailto:mariana.carmo@cmuportugal.org)



**Joana Aleixo, Project Officer**  
[joana.aleixo@cmuportugal.org](mailto:joana.aleixo@cmuportugal.org)

## 2.2 Scientific Directors



**Lia Patricio, Faculdade de Engenharia da Universidade do Porto**



**Luis Filipe Antunes, Faculdade de Ciências da Universidade do Porto**



**Fernando Velez, Instituto de Telecomunicações & Universidade da Beira interior**



**Luis Caires, Faculdade de Ciência e Tecnologia da Universidade Nova de Lisboa**



**João Paulo Cunha, Faculdade de Engenharia, Universidade do Porto**



**Paulo Marques, Feedzai**



**Susana Sargento, Universidade de Aveiro**



**Rui Maranhão, Faculdade de Engenharia da Universidade do Porto**



### 3. About the Carnegie Mellon Program

CMU Portugal's mission is to place Portugal at the forefront of research and technological development in the area of Information and Communication Technologies (ICT), by promoting an innovation ecosystem with a tight coupling between cutting-edge research, world-class graduate education, and highly innovative companies in the data-driven economy.

In order to achieve this goal, the CMU Portugal Program comprises world-class Ph.D. initiatives which includes Dual Degree Ph.D. programs launched in 2007 and the Affiliated Ph.D. programs, which began in 2021.

Our [Ph.D. Programs](#) are structured so that students gain experience both at Carnegie Mellon University and in Portugal. Under the Affiliated Ph.D. programs, candidates are entirely hosted by **a Portuguese University, with a research period at Carnegie Mellon up to 1 year**. Upon the Ph.D. conclusion, candidates will be awarded a degree by the Portuguese host University.



### 3.1 Affiliated Ph.D. Programs

The [CMU Portugal Affiliated Ph.D. Programs](#) Initiative offers Ph.D. scholarships in selected cutting-edge areas of Information and Communication Technologies (ICT), related to the scope of the CMU Portugal Program.

Doctoral students conduct their studies both in Portugal and in the United States, and are co-advised by faculty from Carnegie Mellon University and from Portuguese partner higher education institutions. The expected duration of the program is four years (full-time), 3 years spent in Portugal and 1 year spent at CMU.

Graduates of the program receive a degree by the affiliated Portuguese University.

Scholarships are available to qualified candidates. These scholarships award a monthly stipend and cover tuition fees in Portugal.

By enrolling in an Affiliated Ph.D. program, students experience the advantages of collaborative research between top-tier research institutions. The program's high scientific standards serve to educate high-quality researchers, instructors, and innovators in ICT related areas.

Scholarships are granted in the following CMU Portugal research areas:

- Computer Science,
- Electrical and Computer Engineering,
- Engineering and Public Policy,
- Human-Computer Interaction,
- Language Technologies,
- Machine Learning,
- Mechanical Engineering,
- Robotics,
- Societal Computing,
- Software Engineering.

## 4. Your Scholarship

While pursuing their studies, students enrolled in the Affiliated Ph.D. program will receive a scholarship directly from [Fundação para a Ciência e a Tecnologia \(FCT\)](#). While at Carnegie Mellon University, the scholarship monthly stipend will be increased to the international amount according to the values established by FCT.

[Here](#) you can find more information about the FCT scholarship and the exact amounts you will be receiving during your studies (BI - Bolsa de Investigação para Doutoramento is the Ph. D. scholarship).

FCT is Portugal's national science and technology foundation, and their mission consists of continuously promoting the advancement of scientific and technological knowledge in Portugal, exploring opportunities that become available in any scientific or technological domain, to attain the highest international standards in the creation of knowledge.

FCT Regulations for Research Studentships and Fellowships are available [here](#). The Research Fellowship Holder Statute is available [here](#).

## 4.1 Process to Obtain the FCT Scholarship

Once you are admitted in the Affiliated Ph.D. Programs Call for Scholarships you will need to provide us with a set of documents in order to obtain your scholarship contract. The following documents are required:

1. CMU Portugal student information online form;
2. FCT form: Students need to complete the FCT form (in English), please note that we have included comments to guide you;
3. Passport (EU citizens, third states citizens)/ Citizen Card (Portuguese citizens);
4. Document with the fiscal number in Portugal - NIF (a);
5. Document with Portuguese social security number - NISS (Optional)(b)
6. Document with a bank account number identification (IBAN) and the name of the bank in Portugal (c);
7. Document that proves that the candidate has a permanent residence address in Portugal (d)
8. Academic diploma for each degree that you have: official certified copy and transcript of records. If the degree was conferred by a non-Portuguese higher education institution it will need to be recognized under the Portuguese law (e);
9. Work Plan (f);
10. Declaration of Admission in the Ph.D. Program from the Portuguese University (g);
11. Declaration of Registration in the Ph.D. Program from the Portuguese University (h);
12. Declaration from the Portuguese host institution;
13. Host declaration from CMU;
14. Document signed for each advisor stating that he/she agrees to take responsibility for supervising the student's Ph.D. work;
15. Student CV;
16. Document signed by the student stating his/her professional working status during the scholarship period;
17. If you intend to have an income from a professional activity during the scholarship period please send us the following documents depending on your case:

- a. Up to date document issued by the higher education institution where you are lecturing indicating the type of professional activity, position and number of lecturing hours (per academic year, week, and average number of hours per semester);
- b. Document that states the professional activities that you intend to maintain during your scholarship (i).

### Notes

a) EU citizens and third states citizens can request this document if they are not in Portugal through a fiscal representative or must request this document upon arrival in Portugal to the Portuguese Tax Authority office or Citizen Shop (Loja do Cidadão). The scholarship contract may only be issued after FCT receives this document, so our recommendation is for the student to request the fiscal number as soon as possible;

b) In case the student already made contributions to the social security regime in Portugal;

c) EU citizens and third states citizens are expected to open a bank account in Portugal within three days upon arrival in Portugal and to send this information. The scholarship contract may only be issued after FCT receives this document, so our recommendation is for the student to open a bank account in Portugal as soon as possible;

d) The document should be valid from the starting date of the scholarship onwards. The document to be sent should be the following depending on the student nationality:

- Portuguese citizens: "Atestado de Residência" that can be requested at the local "Junta de Freguesia"
- Citizens from countries that are part of the European Union: "Certificado de registo de cidadão da EU", that can be requested at the local municipality
- Citizens from other countries: permanent residence permit, that can be requested at the Agência para a Integração Migrações e Asilo (AIMA);

When non-Portuguese students involved in the Program come to Portugal with the intention of remaining for a period of **more than three months**, they must apply for a **visa** before departure and also a **residence permit** upon their arrival. You should **apply for a residency visa**. For more information on the types of visas that are available please view the [Portuguese Ministry of Foreign Affairs](#) webpage. Usually, the visa that is issued follows under the category "Research, study, higher education students exchange, internships and volunteer work", but you should confirm this with the nearest Portuguese consulate<sup>1</sup>. The Portuguese consulate will ask you for specific documentation, at this stage we can issue a CMU Portugal support letter that states that you have been admitted in an Affiliated Ph.D. program and that you are funded both while in Portugal and at CMU during a period of up to 4 years. Once you have arrived in Portugal we recommend you to go to an AIMA office in order to **request a residence permit**. The types of residence permits and documentation required are available [here](#), usually they fall on the Article 91 type but this should be confirmed by AIMA. More information on AIMA and their contacts/ offices is available [here](#).

e) If the degrees were conferred by a non-Portuguese higher education institution, and if you have not already done so, you will need to require the recognition of each degree under the Portuguese law. This can be requested online for most of the degrees in the [Directorate-General for Higher Education](#) (they indicate that usually takes up to 30 days if requested online) or in a Portuguese public higher education institution (e.g. University);

f) Mentioning the preliminary research topic, supervisors, host institutions, tasks and tentative timeline location (Portugal or CMU), signed by the student and the advisors;

g) This declaration should be requested to the graduation office of your Portuguese higher education institution;

<sup>1</sup> List of Portuguese consulates in the U.S.:

<https://portaldascomunidades.mne.gov.pt/pt/rede-consular/america/estados-unidos-da-america>

h) After having received the letter of admission from the Portuguese higher education institution (and in case you haven't registered yet) you should register in that institution. If you are registering for the first time, at this point, we recommend you to contact your host institution graduation office to understand what are the documents required and how/when can you register since they vary from institution in Portugal;

i) These professional activities must comply with the list of activities allowed under the exclusive dedication regime (Article 5, numbers 3-4 of the [Research Fellowship Holder Statute](#)).

## 4.2 Support for Installation and Travel

FCT can provide a one-time travel allowance (600€) and a one-time moving allowance (1.000€) for stays abroad for six consecutive months or more. The two allowances may be combined but are always dependent on available funds and approval. These predetermined subsidies will be given only once for the entire duration of the FCT scholarship contract, to cover expenses with installation and travel from Portugal to Carnegie Mellon University.

To receive these allowances, the student must have an FCT contract signed and active. The request can be made to FCT, through the Portugal office. To guarantee that payments are processed in time, we advise students to submit the request 3 months in advance.

Please contact the CMU Portugal Program ([info@cmuportugal.org](mailto:info@cmuportugal.org)) for more information. Please read chapter 6 "During your stay period" for additional information.

## 4.3 Support for Research Visits to CMU While in Portugal

Partial financial support for research visits to CMU (supplementary training activities allowance) while the student is in Portugal, can be requested through the CMU Portugal Program Office in Portugal ([info@cmuportugal.org](mailto:info@cmuportugal.org)).

These visits should last up to 6 months, and a monthly allowance of up to 750€/month will be given. The approval of the financial support will depend upon the scope, the length of the visits for each student, and the availability of funds.

To receive this support, the student must have a FCT contract signed and active, and are required to do the following:

1. Contact the CMU Portugal Program Office in Portugal to check that the motive for the visit qualifies for support (an interview may be required).
2. Send a formal request for support to the National Director of the CMU Portugal Program, including:
  - i. The scholarship reference number (SFRH/BD/.../...) stated in the FCT contract;
  - ii. A short paragraph about the activities to be conducted;
  - iii. The travel dates and the planned duration for the visit to CMU;

iv. The estimated cost for travel and the estimated cost for accommodation.

3. A support letter from both advisors must be submitted with a formal request, stating their agreement with the planned visit, a brief paragraph about the activities to be conducted, travel dates, and the planned duration for the visit to CMU.

A statement that reimbursement for these expenses were not, nor will be, covered by any other source. This can be a separate statement or added to the request.

#### 4.4 Support to Participate in Scientific Meetings

A single allowance to participate in scientific meetings (750€) may be given by FCT within the full duration of the scholarship. Although students may participate in several events for the presentation and dissemination of their work, this allowance will be given only once. The amount of the allowance is fixed and published under the FCT Regulation for Studentships and Fellowships.

In order to receive this allowance, the student must have a FCT contract signed and active. Usually this allowance is given automatically upon the start of the contract, if not, you can request the allowance directly to FCT, or through our Portugal office.

#### 4.5 Health Insurance while at CMU

Affiliated Ph.D. students are J exchange visitors ([J-1](#)), therefore they are required by federal [regulations](#) to have health insurance meeting minimum requirements, which can be found [here](#). Health insurance during the stay at CMU is fully funded through the Affiliated Ph.D. Programs scholarship. Please read chapter 6 "[During your stay period](#)" for additional information.

#### 4.6 Other Sources of Funding

Work of the student receiving the FCT scholarship is under the regime of exclusive dedication and in most cases he/she cannot accumulate it with any other grant, subsidy or paid work. If you intend to have other grant, subsidy or paid work at the same time of the scholarship please contact the CMU Portugal Program ([info@cmuportugal.org](mailto:info@cmuportugal.org)).

#### Internships

Paid internships may be compatible with the Research Grant Holder Statute (Estatuto do Bolseiro de Investigação Científica, Article 5) exclusive dedication requirement only if the internship is:

a) A short, non-permanent activity;

OR/AND

b) Directly related to the work plan.

The student is required to send the following documents (in official stationary, signed and dated) to the Education Officer at [info@cmuportugal.org](mailto:info@cmuportugal.org) with:

- a) A letter for FCT's approval justifying the objective of the internship, duration and the activities to be carried out;
- b) A support letter from the advisors on the internship indicating if the activities to be carried out are related or not with the work plan, that the internship will be carried out in an external host institution, and that the activities are temporary and do not compromise the Ph.D. work plan;
- c) A letter from the institution where the internship will take place supporting the student internship request.

## 5. Before Departure

### 5.1 Financial Arrangements

If you are a foreign student, when coming to Portugal, bring sufficient funds for expenses during the first one to two months, since the first stipend will only be transferred to your account at the end of the first month after the contract is signed. During the first month, the student should account for additional expenses: rent (usually for the first and last month), opening bank accounts, utilities, etc.

### 5.2 Visa and Entering Portugal

Students from EU countries and from European Economic Area/EEA (Iceland, Liechtenstein and Norway) and Switzerland do not need a visa to enter Portugal, which is a signatory of the 1995 Schengen Agreement.

These students have the right to live in the national territory for a period up to 3 months without other conditions and/or formalities beyond having a valid identity card or passport. However, if the stay is longer than 3 months, the student must formalize their right of residence by applying for the residence card within 30 days of arrival, before the end of the

three-month stay in the country at the Serviço de Estrangeiros e Fronteiras (AIMA) of their residence area.

Agência para a Integração Migrações e Asilo, abbreviated to AIMA. AIMA follows on from a restructuring of the Portuguese border control system, which will now be based on separating law enforcement from administrative tasks pertaining to migration and asylum, which until then were under the Borders and Immigration Service (SEF)<sup>2</sup>.

Students from non-EU countries must obtain a residence study visa before departure from their home country. They can request their visa at the nearest Portuguese Embassy or Consulate. Please consider that a 'tourist' visa will not be accepted.

A visa request to enter Portugal should be made several months in advance as the process can take up to 3 months depending on the country of origin (the visa will be valid for the European Area under the Schengen Agreement). Some visa applicants may also be subject to security clearance checks. These checks may take 30 to 60 days to be processed.

A residence visa will allow the student to enter Portugal with the ability to apply for a residence permit. The residence visa allows the holder to remain in Portugal for six months. However, persons applying should take into account that someone having a residence visa is not yet a resident, but only authorized to apply for a residence permit.

It is important to highlight that foreign students entering Portugal through a non-controlled border (whose passports are not stamped in Portugal) need to contact AIMA, within 3 days of their arrival, in order to report their entrance in the country. After this three-day-period, they will be charged a fine.

Useful links:

- [Portuguese Consulates](#)
- [AIMA](#)
- [Secretary-General of the Ministry of Science, Technology and Higher Education \(SG-MCTES\)](#)
- [Directorate-General of Consular Affairs and Portuguese Communities \(DGACCP\)](#)

---

<sup>2</sup> <https://www.portugal.gov.pt/en/gc23/communication/news-item?i=migration-and-asylum-faqs>



## 5.3 Applying for a U.S. Visa

### Long Term Visits

The CMU host department will initiate the visa process once a visiting period at CMU has been determined. CMU Visitors Office validates the Collaborating Visitor Process information submitted by the candidate. The host department will collect all information

required and will provide guidance on visa related procedures and other useful information such as office space, computer and network access, CMU ID, etc. The host department at CMU must provide students' complete information to the Office of International Education (OIE), no later than 60 days in advance of the anticipated arrival date, to allow sufficient time for all document processing requirements. Therefore, timely responses to requests for information from CMU departments is required or may result in visit delays.

The Office of International Education (OIE) at Carnegie Mellon University is committed to supporting, promoting, and celebrating individuals in an intercultural environment. We advocate for and facilitate international and cross-cultural experiences, perspectives and initiatives. OIE promotes and facilitates study abroad and acts as a liaison to the university for international students, researchers, and professors.

#### 1) Get your DS-2019 (for J-1 status) and pay the SEVIS Fee

In order to apply for a visa at a U.S. embassy or consulate, you must first have a [SEVIS \(Student and Exchange Visitor Information System\)](#) generated document issued by a U.S. college or university or Department of State-designated sponsor organization (DS-2019 at CMU). You will be required to submit this form when you apply for a visa. Carnegie Mellon University will provide you with the appropriate SEVIS-generated form only when you have been academically admitted to the institution. The university will also send you additional information about applying for the appropriate visa, as well as other guidance about beginning your academic program in the United States.

**The DS-2019 (for J-1 status) is the document issued by Carnegie Mellon University. It is specific to the institution and program of study you will attend in the U.S. It must be presented to the U.S. Embassy or Consulate abroad to obtain an entry visa and to immigration officials to enter the U.S. in student status. Extensions or updates may be made by contacting the [Office of International Education](#). After your initial entry, a travel signature less than 6 months old is required in order to re-enter the U.S. in student status. Signatures can be obtained at the OIE.**

The Student and Exchange Visitor Program (SEVP) is designed to help the Department of Homeland Security (DHS) and Department of State better monitor school and exchange programs and F, M and J category visitors. Exchange visitor and student information is maintained in the Student and Exchange Visitor Information System (SEVIS). SEVIS is an Internet-based system that maintains accurate and current information on non-immigrant students (F and M visa), exchange visitors (J visa), and their dependents (F-2, M-2, and J-2). SEVIS enables schools and program sponsors to transmit mandatory information and event notifications via the Internet, to the DHS and Department of State (DOS) throughout a student or exchange visitor's stay in the United States.

### 2) Apply for a J-1 VISA

Once you have all the required documentation, you may apply for a visa, even if you do not intend to begin your program of study for several months. It is best to apply early for a visa to ensure there is sufficient time for visa processing. J-1, or Exchange Visitor: This visa is for people who will be participating in an exchange visitor program in the U.S. The "J" visa is for educational and cultural exchange programs.

Citizens of Canada and Bermuda do not require entry visas for study in the U.S. but must present the DS-2019 and financial information when entering the U.S. Landed immigrants of Canada must travel with a passport and obtain a U.S. visa in order to enter the U.S.

In case of denial, ask for the reason in writing before you leave the consulate. Only in this way can you address the U.S. Consulate concern if and when you return for a second interview. Additionally, in case of a denial, contact the Office of International Education for advice and new forms, if necessary, before returning to the U.S. Consulate.

Comprehensive information on applying for a U.S. visa is available on the [U.S. Department of State website](#). In particular, you may wish to consult the visa wait times or the individual consular websites for post-specific visa application procedures.

### Planning Ahead for the Visa Process, Not just your Academic Admission

One of the most important things you can do to ensure that you will be able to arrive in time for the start of your educational program in the United States is to plan well in advance, not only for the academic portion of your U.S. program, but also for the visa process. This means you will need to request and receive the appropriate visa-qualifying document (DS-2019) from the U.S. institution or program sponsor well in advance of your planned departure to the United States. You will also need to make an appointment for your visa interview. Please consult the U.S. Embassy or Consulate nearest you to find out how long it may take to get an appointment.

## Applying for a Visa – Key Points to Keep in Mind

Among the things you'll need to do is pay the SEVIS and visa processing fee, and make an appointment for the visa interview (the procedure will differ on all of these from one U.S. Embassy/Consulate to another, so visit the website of the specific U.S. Embassy). You should also make sure you have all the documentation you will need when you go for the interview, including the visa-qualifying document (DS-2019), financial support documents, proof of payment of the SEVIS and visa fees, and a completed visa application form.

Ensure that you complete the visa application correctly by following the Department of State website procedures carefully.

## Key Information About Visas and Entering the United States

There are two additional pieces of information that are useful to know. The first is that the U.S. Embassy/Consulate cannot issue a visa more than 120 days before the actual start of the program in the United States. However, visa applicants are encouraged to apply for their visa as soon as they are prepared to do so. Thus, if the college or university to which you have been admitted states on the DS-2019 that the program will start on September 1, a visa cannot be issued before May 1. Second, even if you have been issued a visa to enter the United States, you will not be allowed to enter the country more than 30 days before the start of your program if you are an initial entry student. Returning students do not have this requirement. Using the earlier example, if the program of study starts on September 1, you will not be permitted to enter the United States until August 1 or later. Statistics on visa issuance rates around the world can be found [here](#). Information on visa appointment wait times can be found [here](#).

Some visa applicants may be subject to security clearance checks. These checks may take 30 to 45 days to be processed. If you are notified that your visa application will be delayed because of administrative processing or security clearance, please notify the Office of International Education.

If you are applying for a U.S. VISA from Portugal (whether you are Portuguese or an international student), please ask your home university department in Portugal to issue a confirmation letter – signed and with the seal of the institution.

## Short Term Visits

A visa is not required for most tourist and business visits of 90 days or less, provided that you are a citizen of one of the following countries: Andorra, Australia, Austria, Belgium, Brunei, Czech Republic, Denmark, Estonia, Finland, France, Germany, Greece, Hungary, Iceland, Ireland, Italy, Japan, Latvia, Liechtenstein, Lithuania, Luxembourg, Malta, Monaco, the Netherlands, New Zealand, Norway, Portugal, San Marino, Singapore, Slovakia, Slovenia, Spain, South Korea, Sweden, Switzerland, and United Kingdom.

The Visa Waiver Program (VWP) enables nationals of certain countries to travel to the United States for tourism or business for stays of 90 days or less without obtaining a visa. The program was established with the objective of eliminating unnecessary barriers to travel, stimulating the tourism industry, and permitting the Department of State to focus consular resources in other areas.

Please visit the following [link](#) for more information about the visa waiver program.

If your country does not fall under the Visa Waiver program with the United States, please check the website of the embassy or consulate in your home country for information. To find the website, please use the following [link](#).

If you are a native of a country that falls under the Visa Waiver Program and you are planning to go to Carnegie Mellon for periods shorter than 90 days to work on your research, a visa will NOT be required. If your country does not fall under the Visa Waiver program with the United States, please check the website of the embassy or consulate in your home country for information.

## 5.4 Housing Arrangements

### Portugal

You are responsible for making your own housing arrangements for the academic year. The international relations office at your university in Portugal can provide you with local assistance. It is important to start looking for permanent or at least temporary accommodations well in advance.

### Pittsburgh

Graduate students and visiting scholars independently arrange for housing at off-campus locations.

Below are resources for finding off campus housing near Carnegie Mellon University's campus. As you search for housing, we advise that you consider neighborhoods closest to CMU's campus including Oakland, Shadyside, and Squirrel Hill.

CMU Resources:

- [CMU Student Affairs Housing & Residential Education Off Campus Housing Guide](#)
- [CMU's Off-Campus Housing Marketplace](#)
- [Finding Off-Campus Housing Frequently Asked Questions](#)

- [OIE Pre-Arrival Housing Guide](#)
- [CMU Portugal Visitor Guide](#)
- [National Student Services: Renter's Insurance](#)

Depending upon availability, new graduate students may take advantage of a two-week period of Transitional Housing in campus dormitories in August prior to Graduate

Orientation; move in and move out dates are strictly enforced and arrangements must be made in advance. You can find more information here.

International students and scholars should anticipate a brief stay at a hotel or with a friend immediately upon arrival to Pittsburgh.

## 5.5 Medical Insurance

### Medical Insurance in Portugal

Portugal has a public healthcare system ([Serviço Nacional de Saúde - SNS](#)), which grants its population access to the necessary healthcare at reduced fees. Generally, health insurance is not mandatory for foreign residents, although different prices may be charged by the SNS for foreign residents depending on the agreements in place between the country of origin and Portugal and their residency status. If you plan to attend the private healthcare system we strongly recommend you to get health insurance.

If you are a non-Portuguese student attending the Affiliated Ph.D. Program you will most probably have or will have a permanent residence permit, and in this case the access to the SNS will be as nearly the same as any other Portuguese citizen.

You can find below more details depending on your country of origin and residency status in Portugal:

- If you are a non-Portuguese student coming from the EU, EEE, Switzerland, and have a permanent residence permit you will have access to all the SNS services and will be charged a reduced fee. If for some reason you have a temporary residence permit, we recommend you to get the [European Health Insurance Card \(CESD\)](#). This card is available to European citizens who are traveling within the European Economic Area, (i.e. the European Union, Norway, Iceland and Liechtenstein) and Switzerland, for private or professional reasons, and you will be charged nearly the same as a Portuguese citizen and will have access to the same type of healthcare services.

- Non EU-EEA students should ask for further information in their own country before travelling to Portugal. If the student does not have a permanent residence permit and there are agreements in place between Portugal and the country of origin, the student will be charged by the SNS a reduced fee, while the type of access to the healthcare services may vary depending on the agreement in place.
- If there are no agreements in place the student will need to have a residence permit/ work permit to access the SNS. In these cases the student will be charged a reduced fee, and will have access to the same type of healthcare services.

### Civil Liability Insurance

This cost-effective insurance is not required, but is recommended, since health insurance policies and the CESD do not cover civil liability (damage caused to third parties) of your daily activities (except University activities, which are covered by school insurance).

### Personal Physical Accidents Insurance

This insurance is not required however it is recommended. Besides covering personal physical accidents in your daily life, this insurance often provides you with repatriation insurance, in case of sickness or accident (depending on the insurance policies).

### Health Insurance in the U.S.

All J exchange visitors (J-1) are required by federal [regulations](#) to have health insurance meeting minimum requirements, which can be found [here](#).

Health insurance during your stay at CMU is fully funded through the Affiliated Ph.D. Programs scholarship. Please contact the CMU Portugal Program coordination office when you are preparing your transfer request to CMU (more information on chapter 6.3.1 "Going to CMU") so we can provide you more information.

Failure of the J-1 exchange visitor to maintain adequate health insurance will result in the loss of their legal J immigration status. A number of companies offer health insurance. The section titled "J Exchange Visitors Who Do Not Qualify for Carnegie Mellon Employee Benefits" [on this page](#) includes a sample of companies which provide health insurance plans which meet the regulations for J-1 students and exchange visitors.

CMU's Office of International Education cannot recommend plans or guarantee that they will be accepted by Pittsburgh-area providers. Also, while the companies listed [on this page](#) currently offer insurance plans that satisfy the minimum U.S Department of State (DoS) requirements, the J exchange visitor must check with the company directly to make sure that the health coverage meets the minimum DoS requirements, as services are subject to change.

**International students and scholars are not eligible for public benefits available to many U.S. citizens with low incomes. Accepting any such public benefits can cause you to lose your legal status in the U.S. and create a bar to your re-entry to this country. J visa holders (J-1 students, scholars and their dependents) are required by U.S. federal law to have health insurance which meets minimum standards set by the government.**

## 6. During Your Stay Period

### 6.1 Upon Arrival to Portugal

This checklist will help you prioritize upon your arrival in Portugal.

- If entering by car in Portugal, you must notify Portuguese authorities about your arrival within 3 days of their arrival, in order to report their entrance in the country. After this three-day-period, there will be a fine;
- Notify your advisor and the CMU Portugal office of your arrival;
- Register at your Portuguese institution;
- Locate permanent housing;
- Apply for a NIF (número de identificação fiscal). To apply for a NIF, you must appear in person at the office in Loja do Cidadão nearest your host institution. Take the following documents with you:
  - Your passport and one other document that establishes your age and identity
  - Your Portuguese address
- Open a bank account (IBAN). To obtain a bank account, you must appear in person at a bank office nearest your host institution, and take the following documents with you:
  - Your NIF number
  - Your passport
  - Contract from Carnegie Mellon Portugal Program or letter of admission
  - Your Portuguese address
- Obtain gas, electricity, water and telephone services;
- Identify a doctor, dentist and hospital in case of an emergency;
- Provide your Portuguese address to all university administrative offices and [info@cmuportugal.org](mailto:info@cmuportugal.org)

### Residence Card

#### Request a residence card

Once you have arrived in Portugal we recommend you to go to an AIMA office in order to **request a residence permit**. The type of residence permits and documentation required

are available [here](#), usually they fall on the Article 91 type but this should be confirmed by AIMA. More information on AIMA and their contacts/ offices is available [here](#).

Failure to apply for a residence card within the specified time is a serious offense and can result in a heavy fine and even deportation. Please contact Serviço de Estrangeiros e Fronteiras for more information.

Students enrolled in the doctoral programs start their studies at a Portuguese university. However, during their studies students are required to spend one year in the U.S., working on their research, before returning to Portugal.

### **THEREFORE:**

- During the prolonged stay abroad, which is part of the doctoral program, a student's residence card may expire. While abroad, it is not possible to make a request for renewal of the residence card. Therefore, students are required to apply for the issuance of a new visa in order to return to Portugal (which implies a new application for residence at AIMA once back in Portugal).
- Furthermore, under the current legislation (Article 85. of Law No. 23/2007), the residence permit in Portugal can be revoked when the person, without suitable reason, is absent from the country for a period of 6 consecutive months, or 8 interpolated months, during the total period of validity of the authorization. This situation requires a new application and issuance of a new visa in order to return to Portugal (and once again a new application for residence at AIMA when back in Portugal).

### **SOLUTIONS:**

To avoid these situations and the repetition of the application process for a visa to Portugal (at Portuguese consulates abroad) as well as the application process for the residence card in Portugal, the following solutions are available (as appropriate):

- Application for the renewal of the residence permit can be done before leaving Portugal to the foreign country when the last 30 days of the validity of the authorization coincides with the period of absence of the country.
- Additionally, in order not to revoke the residence permit in its duration due to absence from Portugal (as it foreseen by the Portuguese law), students shall submit a justification to AIMA (prior to the absence). The continuation of the course of studies in a third country (in this case the U.S.) is an acceptable reason.



### Renew a residence card

To **renew your residence permit** please find [here](#) more information on the required documents. Before preparing this information we advise you to contact AIMA to confirm what are the necessary documents.

## 6.2 Upon Arrival to the U.S.

- Meet your departments' faculty host and key staff;
- Check in with the OIE so that the office may notify SEVIS of the arrival at intended destination (this is mandatory);
- Attend an OIE International Visitor Orientation Session;
- Through your host department obtain a CMU ID via the Card Office, and CMU IT Guest Privileges via Computing Services;
- Office space is provided by the host department;
- Contact the [CMU Portugal office at CMU](#) to inform of arrival. Contacts should be made by email [cmuportugal@andrew.cmu.edu](mailto:cmuportugal@andrew.cmu.edu);
- Find off-campus housing;
- You may want to open a U.S. bank account. Take into consideration services and fees associated with checking and savings accounts, interest rates, wire transfer fees, ATM machine access, credit and debit card availability, as well as telephone and web banking. You may not want to open an account until you have secured housing as proximity to your residence is also an important consideration;
- Health insurance. You should have a valid health insurance from the day of your arrival in the U.S. More information on health insurance while at CMU on chapter 5.5.2 "Health insurance in the U.S."

## Foreign Student Documents and Maintaining Legal Immigration Status

International students are required to abide by United States immigration regulations throughout their stay in the U.S. International students are admitted to the U.S. by the Department of Homeland Security (DHS) for the purpose of being full-time students. Participation by students in any other activity, from employment to vacation, is considered to be a privilege and is only allowable in accordance with strict DHS rules. Penalties for violations of immigration law can be severe and include deportation and 10-year bars from reentry to the US, so it is extremely important for students to understand their responsibilities.

International students are normally admitted to the U.S. for "Duration of Status" (D/S). This means that they are allowed to remain in the U.S. for as long as they "maintain legal student status," NOT for the length of time listed on their visa or Certificate of Eligibility (DS-2019 form - see below). Listed below are the documents that J-1 students need to keep current

while they are residing in the U.S. along with the basic rules that students must follow in order to maintain legal student status in the U.S.

Remember that it is the student's responsibility to be informed about immigration rules and any rule changes which occur during their stay in the U.S. The Office of International

Education (OIE) provides Carnegie Mellon international students with the necessary information to do this, but it is the student and not the university who is ultimately responsible for abiding by the rules and maintaining legal student status.

<p><b>Passport</b></p>	<p>The passport is the legal document issued by your country of citizenship. It must be kept valid at all times during your stay in the U.S. and must be valid at least 6 months into the future to re-enter the U.S. or apply for a visa. The passport can usually be renewed through your home country's Embassy or Consulate in the United States.</p>
<p><b>Certificate of Eligibility DS- 2019</b></p>	<p>The DS-2019 (for J-1 status) is the document issued by your school or a sponsoring agency. It is specific to the institution and program of study you will attend in the U.S. It must be presented to the U.S. Embassy or Consulate abroad to obtain an entry visa and to immigration officials to enter the U.S. in student status. Extensions or updates may be made by contacting OIE or your sponsoring agency. After your initial entry, a travel signature less than 6 months old is required in order to re-enter the U.S. in student status. Signatures can be obtained at OIE.</p>
<p><b>I-94 Arrival/Departure Record</b></p>	<p>The I-94 is the white card completed before passing U.S. immigration officials upon entrance to the U.S. It will be stamped with your date and port of entry. Your immigration status and expiration date will also be noted on the card. For F-1 and J-1 students, the "expiration date" should be D/S, or duration of status, not an actual date. This means F-1 and J-1 students are permitted to remain in the U.S. as long as they have a valid I-20 or DS-2019, are enrolled in the institution and academic program listed on the form, and have otherwise maintained their immigration status. Students who receive an I-94 card with an actual expiration date should contact OIE immediately. The number at the top of the I-94 card that you receive upon each entry is called your Admission Number or I-94 number.</p>
<p><b>Entry Visa</b></p>	<p>The U.S. entry visa is a sticker on a page of your passport which permits you to enter the U.S.</p>

Students will have either an F-1 or a J-1 entry visa. The visa may expire while you are in the U.S. You cannot and need not renew it while you are here. A new entry visa will be required if the original expires and you travel outside and then wish to re-enter the U.S. in legal student status.

### YOU MUST ALWAYS:

- Maintain a valid passport throughout your stay in the U.S.
- Attend the school you are authorized to attend by U.S. Citizenship and Immigration Services (USCIS). This is the school whose name appears on the DS-2019.
- Keep your Certificate of Eligibility (DS-2019 form) valid at all times and apply for extensions of stay at least one month before the document expires.
- Keep local and permanent address information current while in the U.S. Enrolled students may do this through the HUB's Student Information On-Line website. The "off campus residence" address must be completed with your current U.S. residential address (except for undergraduate students living on campus). "Permanent address" must be an address in your home country.
- Complete necessary immigration transfer procedures when changing from one school to another in the U.S. by consulting the international student advisor at the new school and informing the international student advisor at your current school of your intent to transfer.
- All J exchange visitors (J-1) are required by federal regulations to have health insurance meeting minimum requirements, which can be found here. Failure of the J-1 exchange visitor to maintain adequate health insurance will result in the loss of their legal J immigration status. A number of companies offer health insurance. On this page, there are a sample of companies which provide health insurance plans which meet the regulations for J-1 students and exchange visitors. PLEASE NOTE: CMU's Office of International Education cannot recommend plans or guarantee that they will be accepted by Pittsburgh-area providers. Also, while the companies listed on this page currently offer insurance plans that satisfy the minimum U.S. Department of State (DoS) requirements, the J exchange visitor must check with the company directly to make sure that the health coverage meets the minimum DoS requirements, as services are subject to change. If you are in J-1 status, you must apply for Academic Training before your DS-2019 expires.
- J-1 students have a 30-day grace period in which to do one of the following:
  - Leave the U.S.
  - Change to another immigration status.

- To obtain a new certificate of eligibility for a new school or program, J-1 students cannot use the 30-day grace period for SEVIS transfer purposes or to change level but must obtain a new certificate of eligibility for a new program before the end date listed on the DS-2019.

### YOU MUST NEVER:

- WORK OFF CAMPUS unless you have the necessary authorization from an OIE student advisor (consult an OIE advisor for details);
- WORK ON CAMPUS more than 20 hours per week while school is in session;
  - Note that once you have completed or terminated your program, or have failed to maintain legal student status, you can no longer legally enter the US with DS-2019 form and the staff of OIE can no longer sign those forms.

## 6.3 Transfers between Portugal and USA

This section provides students a summary of important information on transfers between Carnegie Mellon University (CMU) and Portugal, regarding their FCT scholarship.

While pursuing their studies, students enrolled in the Affiliated Ph.D. program will receive a scholarship directly from [Fundação para a Ciência e a Tecnologia \(FCT\)](#). While at Carnegie Mellon University, the scholarship monthly stipend will be increased to the international amount according to the values established by FCT. In order to avoid disruptions of the payments, students are required to take some actions that are summarized below.

### Activation of scholarship when at CMU and scholarship renewal

#### Going to CMU

Due to Visa restrictions, it's recommended for students to have a single 12 month-long visiting period to CMU. If the students wish to have a shorter visit, they must contact the CMU Portugal Program beforehand.

When going to CMU, students **must**:

1) **Notify** both CMU Portugal Offices via email to [CMUPortugal@andrew.cmu.edu](mailto:CMUPortugal@andrew.cmu.edu) (CMU Portugal office at CMU) and [info@cmuportugal.org](mailto:info@cmuportugal.org) (CMU Portugal office in Portugal). It is advised that this contact be made at least 4 months prior to the planned

arrival date;

2) **ACTIVATE** their FCT scholarship international amount, by doing the following:

A) Send a request to activate the scholarship to the CMU Portugal coordination office **at least 90 days before going to CMU** ([info@cmuportugal.org](mailto:info@cmuportugal.org)) with:

1. Document signed by the student with the following information on the scholarship renewal request:
  - a. the planned date of transfer;
  - b. the scholarship reference number (SFRH/BD/.../...) stated in the FCT contract;
  - c. a short paragraph on the coursework and the research developed in the doctoral program;
2. Submit a support letter from both advisors together with the request, stating their agreement with the transfer date (and the renewal, if applicable), and including a short statement on the student's progress in the work plan.

*If the activation and the renewal of the scholarship coincide, please submit the following documents together with the reactivation request:*

1. An up-to-date declaration of the student's professional situation, this is a template document from FCT, you can contact the coordination office to provide you that document;
2. A statement from the host institution on the student's work, including an evaluation of the student's activities (progress according to the approved work plan), and a recommendation on whether it is appropriate to renew the scholarship for one more year;
3. Document issued by the Portuguese higher education institution hosting the student in which it is stated that the student is currently registered in the Ph.D.;
4. Declaration of contributions to Portuguese social security (if applicable)<sup>3</sup>.

---

<sup>3</sup> To obtain the declaration of contributions to social security please go to [www.seg-social.pt](http://www.seg-social.pt) and select "Conta-Corrente" in the menu "Serviços". Then go to "Pagamentos à Segurança Social" and select "Consultar a minha conta-corrente de Contribuições por trabalho independente e Seguro Social Voluntário". You can also obtain this declaration in any Social Security Office or Lojas de Cidadão.

B) After the confirmation by the Coordination office that all documents are in order, **the request must be forwarded to FCT by the student on the website [MyFCT](#).**

### Transferring back to the Portuguese Institution

A) When transferring back to the Portuguese Institution, students must inform the CMU Portugal Program coordination office ([info@cmuportugal.org](mailto:info@cmuportugal.org)) **at least 90 days before the transfer date** by sending the following information:

1. Document signed by the student with the following information on the scholarship renewal request:
  - a. the planned date of transfer;
  - b. the scholarship reference number (SFRH/BD/.../...) stated in the FCT contract (in case the student has previously been in a Portuguese institution, with scholarship support);
  - c. a short paragraph on the coursework and the research developed in the doctoral program;
2. Submit a support letter from both advisors together with the request, stating their agreement with the transfer date (and the renewal, if applicable), and including a short statement on the student's work plan progress.

B) FCT automatically updates the national amount so **it is not required for the student to submit the documents** on the website [MyFCT](#).

*If the activation and the renewal of the scholarship coincide, please submit the following documents together with the reactivation request:*

1. An up-to-date declaration of the student's professional situation, this is a template document from FCT, you can contact the coordination office so we can provide you that document;
2. A statement from the host institution on the student's work, including an evaluation of the student's activities (progress according to the approved work plan), and a recommendation on whether it is appropriate to renew the scholarship for one more year;

3. Document issued by the Portuguese higher education institution hosting the student in which it is stated that the student is currently registered in the Ph.D.;
4. Declaration of contributions to Portuguese social security (if applicable)<sup>4</sup>.

C) In case of renewal, after we check that all documents are in order, **the request must be forwarded to FCT by the student on the website [MyFCT](#)**. The grant renewal does not require signing of a new contract.

### Staying at a Portuguese Institution

A request to **RENEW** the FCT contract is required when the students are in Portugal for more than 12 consecutive months (without interruption). **The contract is not renewed automatically**. In this situation, the students are required to do the following:

A) Send an email to the CMU Portugal coordination office at least **90 days before the scholarship starting date** ([info@cmuportugal.org](mailto:info@cmuportugal.org)), with:

1. Document signed by the student with the following information on the scholarship renewal request:
  - a. The expected month for the beginning of the renewal;
  - b. The scholarship reference number (SFRH/BD/.../...) stated in the FCT contract;
  - c. A short paragraph on the coursework and the research developed in the doctoral program;
2. Submit a support letter from both advisors together with the request.
3. stating their agreement with the renewal, and including a short statement on the student's work plan progress;
4. An up-to-date declaration of the student's professional situation, this is a template document from FCT, you can contact the coordination office to provide you that document;

---

<sup>4</sup> To obtain the declaration of contributions to social security please go to [www.seg-social.pt](http://www.seg-social.pt) and select "Conta-Corrente" in the menu "Serviços". Then go to "Pagamentos à Segurança Social" and select "Consultar a minha conta-corrente de Contribuições por trabalho independente e Seguro Social Voluntário". You can also obtain this declaration in any Social Security Office or Lojas de Cidadão.

5. Document issued by the Portuguese higher education institution hosting the student in which it is stated that the student is currently registered in the Ph.D;
6. Declaration of contributions to Portuguese social security (if applicable).<sup>5</sup>

B) After a confirmation by the Coordination office that all documents are in order, **the request must be forwarded to FCT by the student on the website [MyFCT](#)**. The grant renewal does not require signing of a new contract.

## 7. Reporting to the CMU Portugal Program

Students must inform the CMU Portugal Program about their plans well in advance, since the Program is carried out on the two continents and timely communication between all parties in the Program is a must.

You should notify the Coordination Office when you:

1. Arrive at the institution;
2. Submit documents for FCT scholarship;
3. Transfer to Carnegie Mellon or to a Portuguese Institution;
4. Make an emergency departure from the U.S. or Portugal;
5. Have a success story to share;
6. Have ideas and suggestions.

Also, share with us:

1. Any important academic problems;
2. Serious health issues;
3. Change in address within 10 days of making such a change.

---

<sup>5</sup> To obtain the declaration of contributions to social security please go to [www.seg-social.pt](http://www.seg-social.pt) and select "Conta-Corrente" in the menu "Serviços". Then go to "Pagamentos à Segurança Social" and select "Consultar a minha conta-corrente de Contribuições por trabalho independente e Seguro Social Voluntário". You can also obtain this declaration in any Social Security Office or Lojas de Cidadão.



## 8. Good Practice for Acknowledging FCT and CMU Portugal Program

Beneficiaries of Ph.D. scholarships funded through FCT under the CMU Portugal Program should explicitly acknowledge their financial support. This must be ensured across all communication, dissemination and acknowledgement texts (e.g.: in scientific papers; communications) and visual marks (e.g.: banners in posters, presentations, brochures, videos or animations).

Visual Mark – integrated logo banner

Beneficiaries are encouraged to use the mandatory logos of FCT, acting as funder, and CMU Portugal under which the scholarship is being supported. The scale and dimension of FCT and the CMU Portugal logos must be proportionate to other mandatory logos, i.e., must have a similar scale and dimension. Visual mark (logo banner) should be used in written reports, posters, scientific presentations, press releases, videos and animations, and similar materials.

CMU Portugal and FCT logos and guidelines are available for download [here](#) and [here](#) respectively.

Please e-mail us at [info@cmuportugal.org](mailto:info@cmuportugal.org) if any doubts arise on the use of the logo or if further information is required.

Example of acknowledgement text to use in scientific papers, written communications, IPR applications and communication products such as press releases, news articles, a project's official webpage, and in communication products such as tv or radio spots, recognizing FCT and CMU Portugal:

[En] This work is co- financed by Fundação para a Ciência e a Tecnologia (Portuguese Foundation for Science and Technology) through the Carnegie Mellon Portugal Program under the fellowship (insert FCT grant reference SFRH/BD/xxxxxx/20xx).

[Pt] Este trabalho é cofinanciado pela Fundação para a Ciência e a Tecnologia, através do Programa Carnegie Mellon Portugal no âmbito da bolsa (inserir referência da bolsa FCT SFRH / BD / xxxxxx / 20xx).

## 9. Academic Calendar in Portugal

Universities and colleges follow an academic year, which consists of two semesters. Academic year begins with the start of autumn and ends the following summer.

**Christmas Break:** Usually beginning the 3rd week of December and lasts for two weeks including Christmas and New Year holidays.

**Carnival Break:** Three days (Monday, Tuesday and Wednesday) during Carnival.

**Easter Break:** Around two weeks including Easter. It varies from year to year, but is usually around late March or mid-April.

**Summer Break:** Takes place from late July to early September and it separates one school year from another.

### Important dates - Basic Calendar<sup>6</sup>

Last Week of August/ Mid-September	Arrival - Start of the Academic Year
Mid-September Through Mid-February	1st Semester: <ul style="list-style-type: none"> <li>● Courses</li> <li>● Research</li> </ul> First day of class: Mid-September Christmas break: Last week of December + First week of January Final exams: End of February
March Through Mid-July	2nd Semester: <ul style="list-style-type: none"> <li>● Courses</li> <li>● Research</li> </ul> First day of class: Beginning of March Final Exams: Mid-June

<sup>6</sup> This calendar represents a general guideline for the incoming students. Please check the website of your home institution to get the exact academic calendar.

## 10. Useful Addresses

OIE - Office of International Education at Carnegie Mellon University

[Office of International Education](#)

Carnegie Mellon University  
5000 Forbes Avenue Cyert Hall, First Floor Atrium  
Pittsburgh, PA 15213

### Governmental Agencies in Portugal

- [AIMA - Agência para a Integração Migrações e Asilo](#)
- [ACM - Alto Comissariado para as imigrações](#)
- [Loja do Cidadão](#)
- [Embassies in Portugal](#)

### Courses of Portuguese Language for Foreigners

- [University of Porto](#)
- [University of Coimbra](#)
- [University of Lisbon](#)
- [University of Aveiro](#)
- [University of Minho](#)

### Where to Learn Portuguese?

It is common for universities to have Portuguese courses for foreign students throughout the academic year. Students can obtain more information at the international office support of their Portuguese institution.

### Cultural Organizations in Pittsburgh

[GLOBAL PITTSBURGH](#) is an organization which brings together international residents and visitors temporarily living, studying and working in the Pittsburgh region.