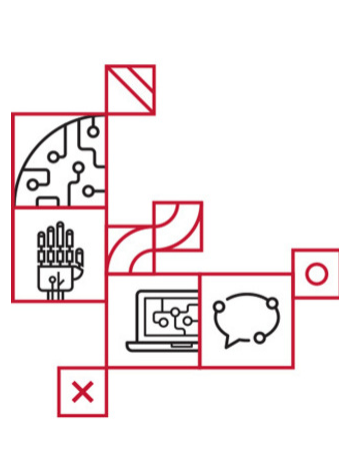


News from the Fence



Open Call for Large-Scale collaborative R&TD projects.

Applications until May 31st

CMU Portugal has 5M euros to support Large-scale collaborative research projects

The projects must be led by a Portuguese company, include two entities of the Portuguese R&D system and the participation of at least one CMU principal investigator for a maximum period of 36 months. All projects must address issues that are relevant to the industry covering one or more of the following topics:

- Data Science and Engineering;
- Artificial Intelligence, Machine Learning, Language Technologies, Data Analytics and Cloud Computing;
- Autonomy and Mobility;
- Design in a Variety of Societal Settings and Applications such as tourism, logistics or creative industries.

[More information](#)

[Terms of the call](#)

[FAQ](#)

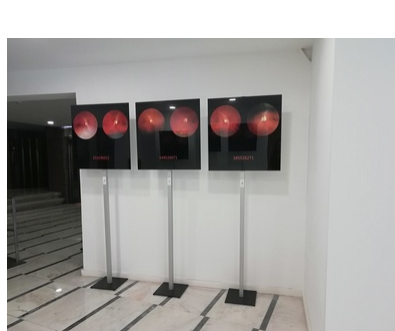
In the Media: [Jornal Económico](#); [Sapo tek](#); [Portugal Global](#); [PC Guia](#)

[Read More](#)

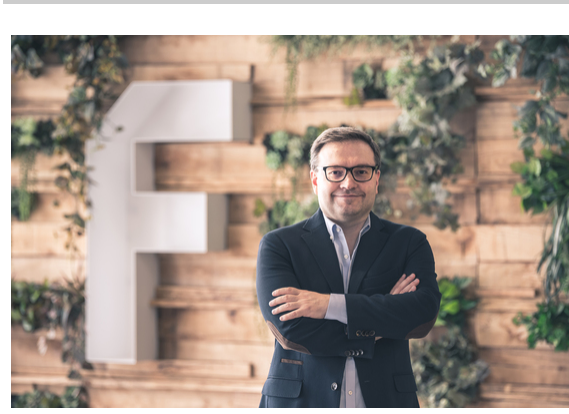
SCREEN DR Project Photo Exhibition now at FCT

The "Look and See. Sense and Live" and "Other Portraits and Self-portraits" Exhibition will take place at Fundação para a Ciência e Tecnologia (FCT) until the end of April. This initiative was developed under the CMU Portugal Program project [SCREEN DR](#), led by Professor Aurélio Campilho from INESC TEC's Centre for Biomedical Engineering Research (C-BER) in collaboration with the photographer Renato Roque.

The main objective of the SCREEN-DR research project was to develop a computational platform for screening diabetic retinopathy using specialized photographic cameras to digitize retinal images, the retinographies, that were used for this photo exhibition.



[Read More](#)



Industry Partner Interview: Cipriano de Sousa, Farfetch CTO

Cipriano Sousa is Chief technology officer (CTO) at [Farfetch](#), a leading online retail platform which mission is to be the global technology platform for luxury fashion. In 2018 the company success turned it into the first Portuguese Unicorn company and became one of CMU Portugal Program Industry Affiliates.

[Read More](#)



Priberam joins the list of CMU Portugal Program affiliated partners

CMU Portugal is honored to announce [Priberam](#) as its new Industry Affiliated partner, a list that has now 14 companies committed to actively contribute to the advanced education and research program.

[Read More](#)



CMU Portugal Inside Story: Zita Marinho

Profile interview with [Zita Marinho](#), Alumnus in Computer Science/Robotics since 2018. Her research areas have a focus on machine learning and optimization with applications on Robotics and Natural Language Processing.

Zita is currently a **researcher at Priberam Labs** and is affiliated with the Institute for Robotics and Systems, at University of Lisbon, Portugal.

[Read More](#)



CMU Portugal Website Update

The [new CMU Portugal website](#) is in the process of being updated. At the moment the media archive between 2009-2018 is already available at the [News Section](#) of the website and we are updating the People section, with profiles from [Alumni](#) and [Students](#).

If you are a CMU Portugal alumni or student, please answer the email that we have sent you with the update request or contact us at: info@cmuportugal.org.

Upcoming events



- [Photo exhibition "'Look and See. Sense and Live" and "Other Portraits and Self-portraits"](#)
Until end of April | FCT, Lisbon
- [Applications to the Next Generation Internet \(NGI\)](#).- funding opportunities for researchers and innovators to build a better Internet
30 April 2019 | [Online information](#)
- ["Jornadas de Computação Científica"](#) (Scientific Computing Meeting 2019)
6-8 May 2019 | Ponta Delgada, Açores (Portugal)
- [ECSEL \(Electronic Components and Systems for European Leadership\) Call](#)
7 May 2019 | [Online Application](#)
- [UNESCO Kalinga Prize for the Popularization of Science](#)
31 May 2019 | Deadline for the call for nominations
- [Deadline for applications to the CMU Portugal Large-scale collaborative research projects](#)
31 May 2019 | [Online Application](#)

CMU Portugal Publications



Papers

2019

["Peer Adoption and Development of Health Innovations by Patients: National Representative Study of 6204 Citizens"](#) - Oliveira P., Zejnolovic L., Azevedo S., Rodrigues A.M., Canhão H. Journal of Medical Internet Research, Volume 21, Number 3 | 2019

["Why has China overinvested in coal power?"](#). Ren M., Branstetter L., Kovak B., Amanios D., Yuan J. NBER Working Paper No. 25437 | 2019

["SSTS: A syntactic tool for pattern search on time series"](#). Rodrigues J., Folgado D., Belo D., Gamboa H., Caic M., Avelino J., Mahr D., Odekerken G., Odekerken-Schroder G., Bernardino A. International Journal of Social Robotics | 2019

["Robotic Versus Human Coaches for Active Aging: An Automated Social Presence Perspective"](#). Caic M., Avelino J., Mahr D., Odekerken G., Odekerken-Schroder G., Bernardino A. International Journal of Social Robotics | 2019

["Beyond the Self: Using Grounded Affordances to Interpret and Describe Others' Actions"](#). Saponaro G., Jamone L., Bernardino A., Salvi G. IEEE Transactions on Cognitive and Developmental Systems | 2019

[Joining Global Aerospace Value Networks: Lessons for Industrial Development Policies](#). Santos C., Abubakar S., Barros A.C., Mendonça J., Dalmarco G., Godsell, J. Space Policy Journal | Feb. 2019.

["SSTS: A Syntactic Tool For Pattern Search On Time Series"](#). Rodrigues J., Folgado D., Belo D., Gambôa H. Information Processing & Management, 56 (1): 61-76 | 2019

[Reliable interfaces for EGain multi-layer stretchable circuits and microelectronics](#). Marques D., Lopes P., Almeida A., Majidi C., Tavakoli M. Lab on a chip | 2019.

["When Patients Become Innovators"](#). DeMonaco H., Oliveira P., Torrance A., von Hippel E. Sloan Management Review | Spring 2019.

* collected by Google Scholar Alert for "CMU Portugal" + "Carnegie Mellon Portugal" and researchers' contributions.

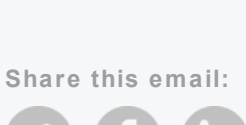
We would love to hear back from you. Share your news with the CMU Portugal community and let us know what is happening by sending an e-mail to info@cmuportugal.org.

Join the conversation.



cmuportugal.org

Share this email:



[Manage](#) your preferences | [Opt out](#) using TrueRemove®

Got this as a forward? [Sign up](#) to receive our future emails.

View this email [online](#).

Rua Alves Redol number 9
Lisboa, | 1000-029 PT

This email was sent to .
To continue receiving our emails, add us to your address book.

